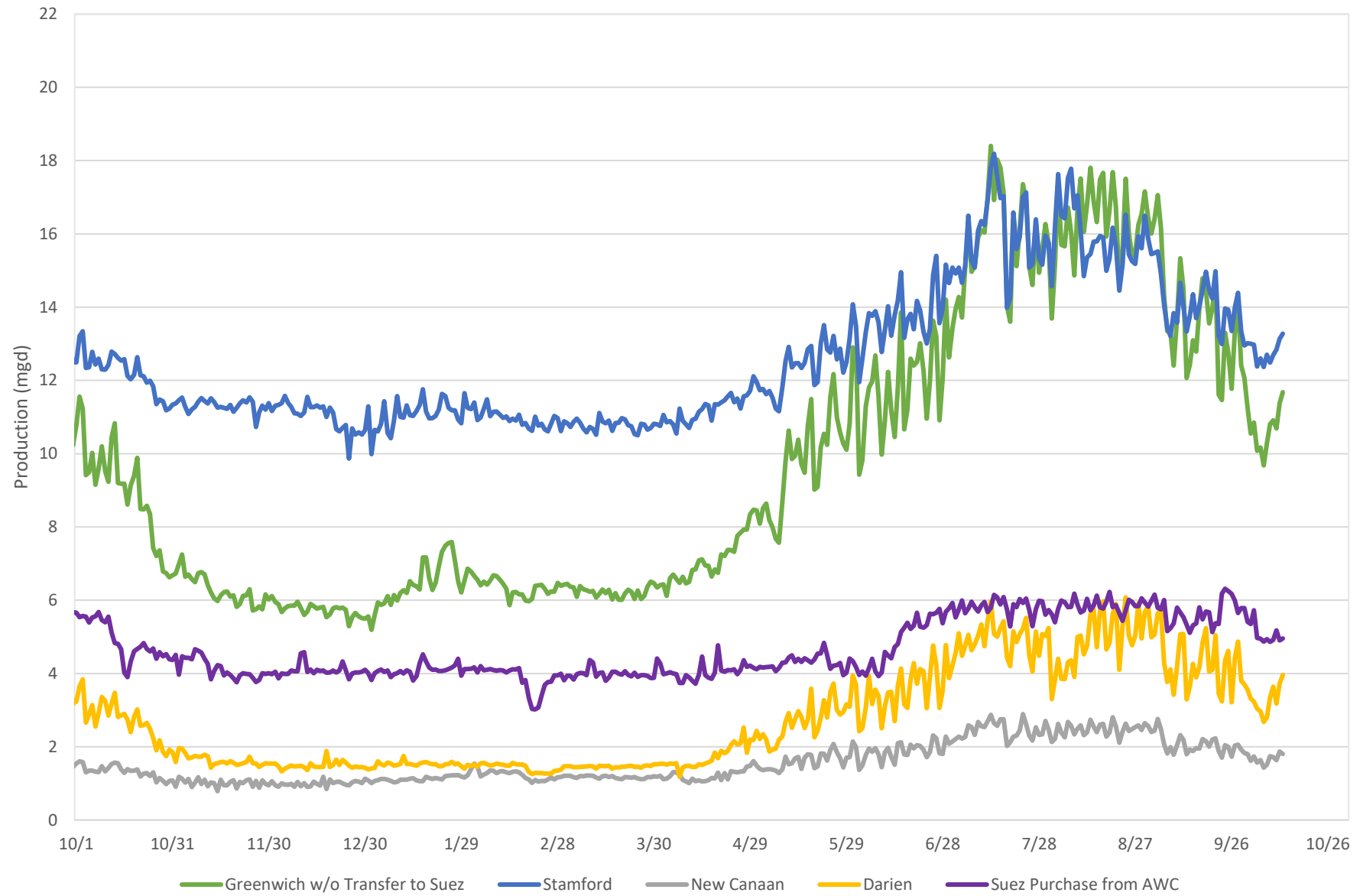


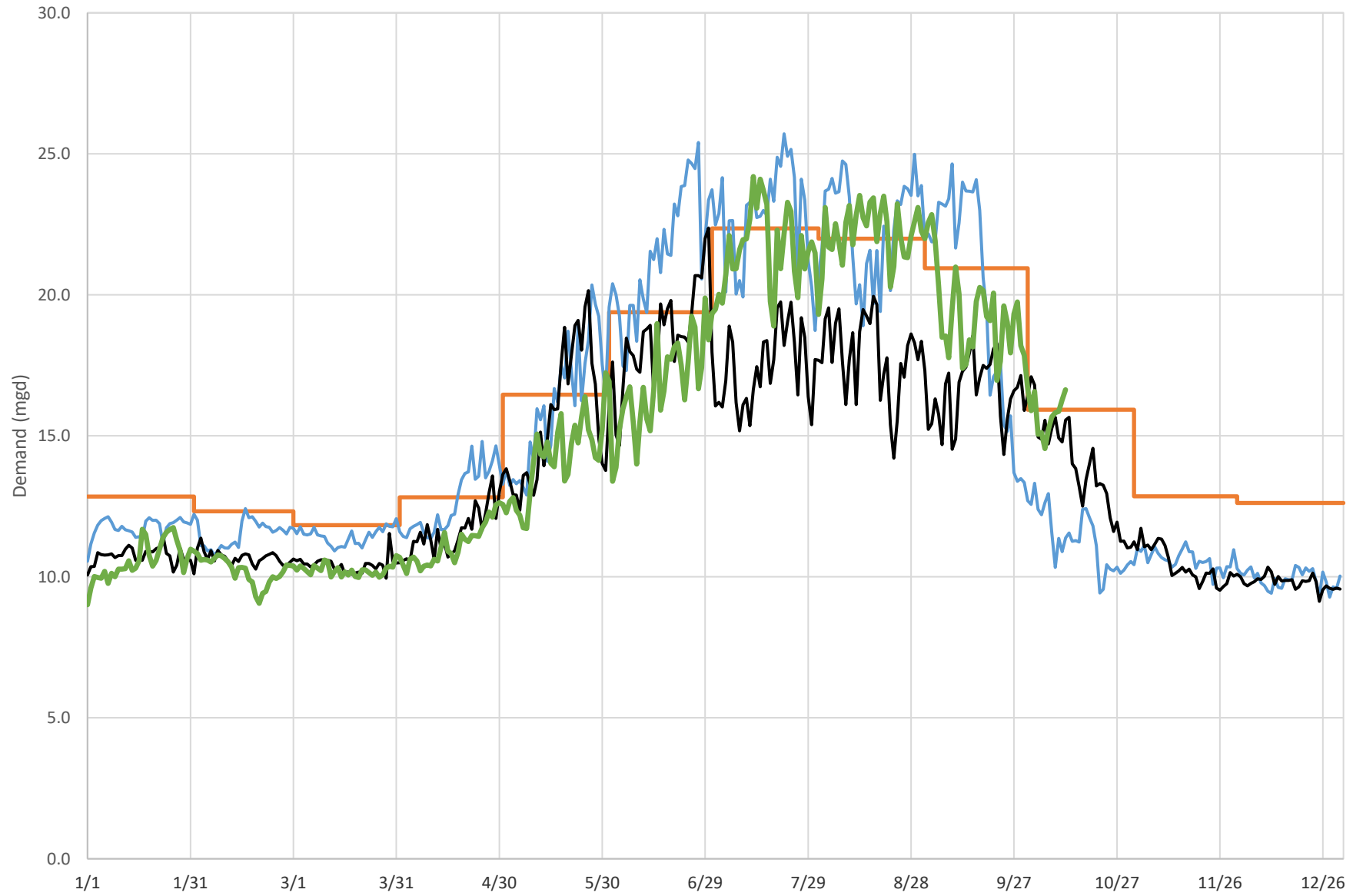


Regional Water Demands 2022





Greenwich Demand Summary

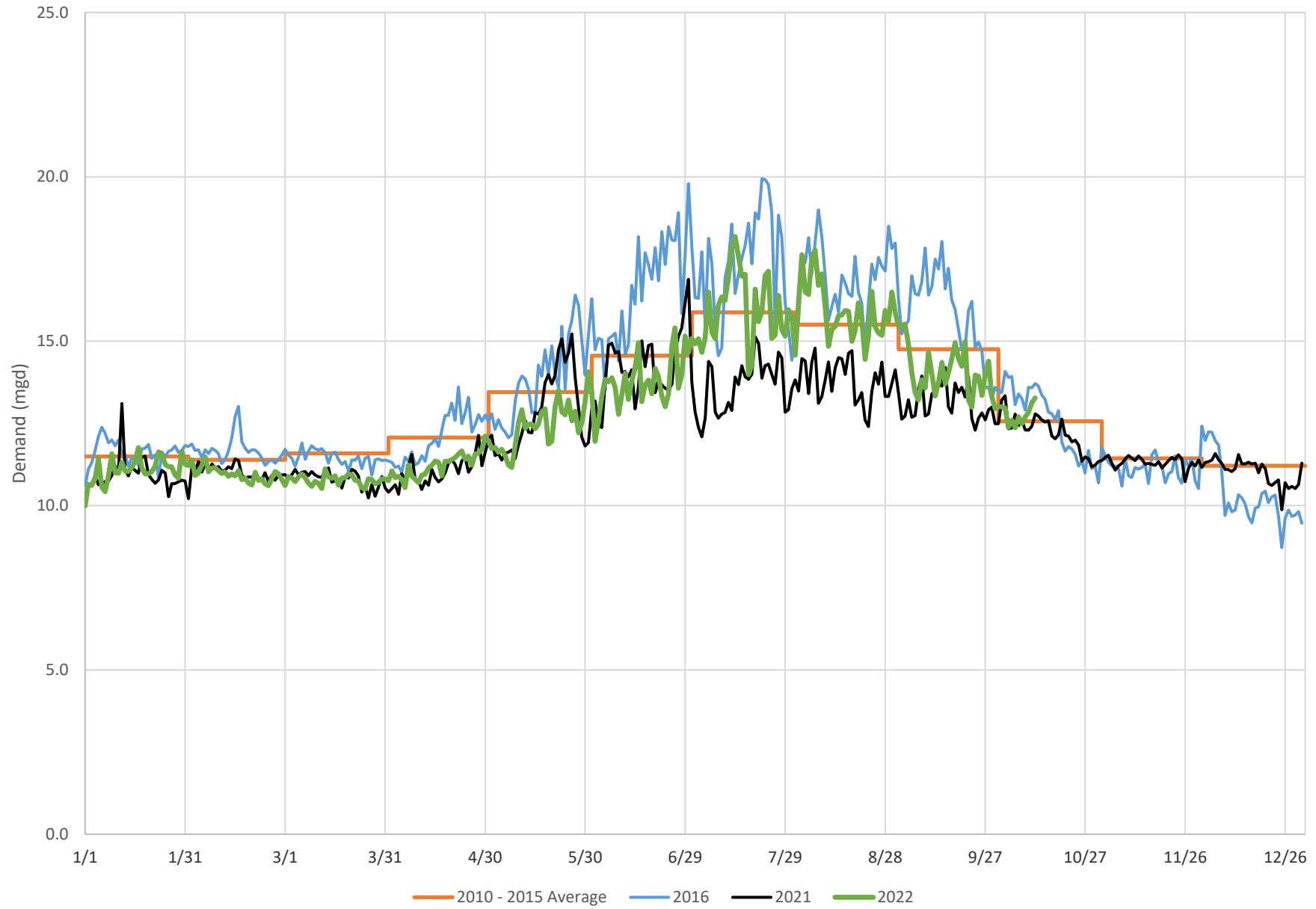


Includes transfers to Suez

— 2010 - 2015 Average — 2016 — 2021 — 2022

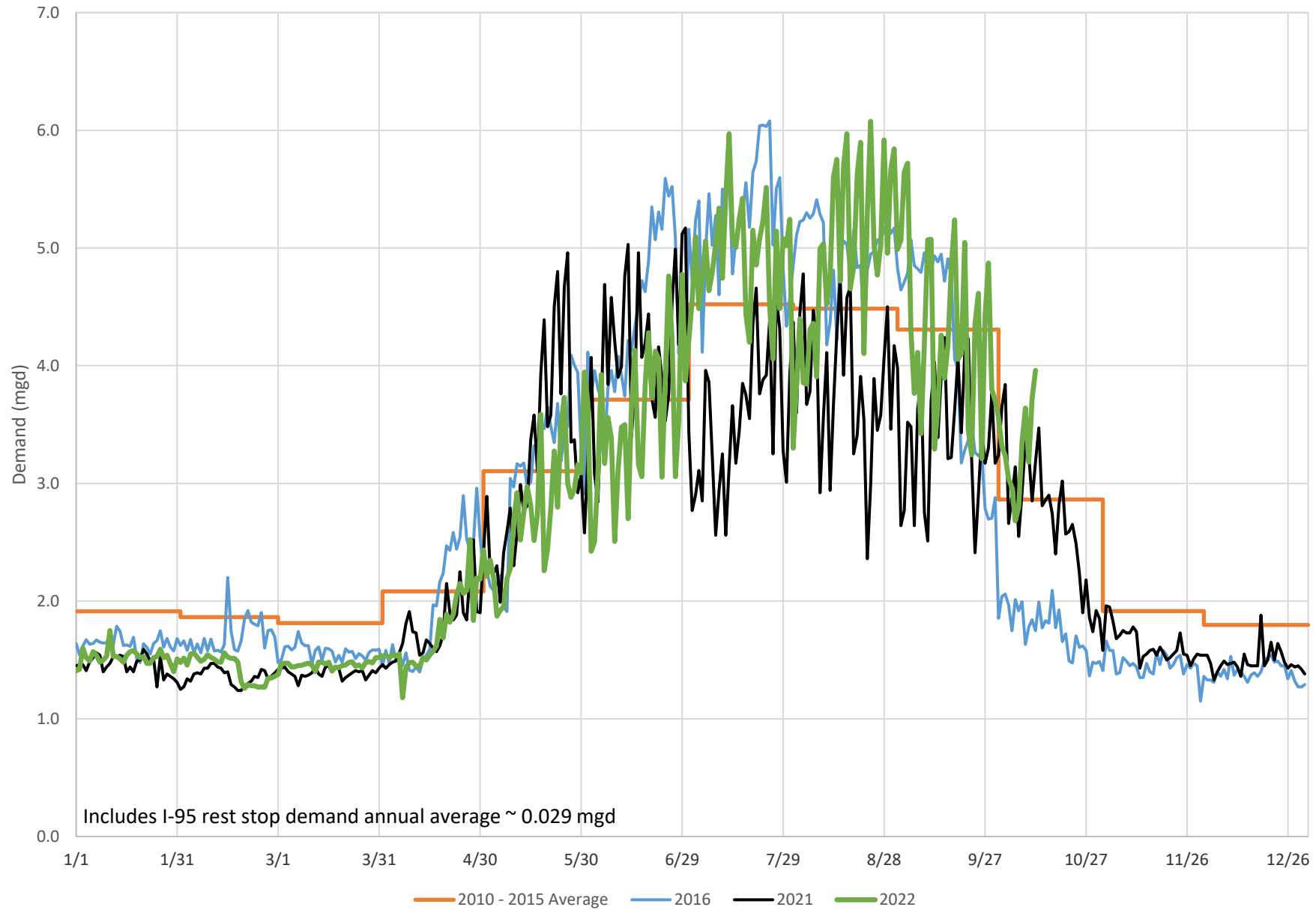


Stamford Demand Summary



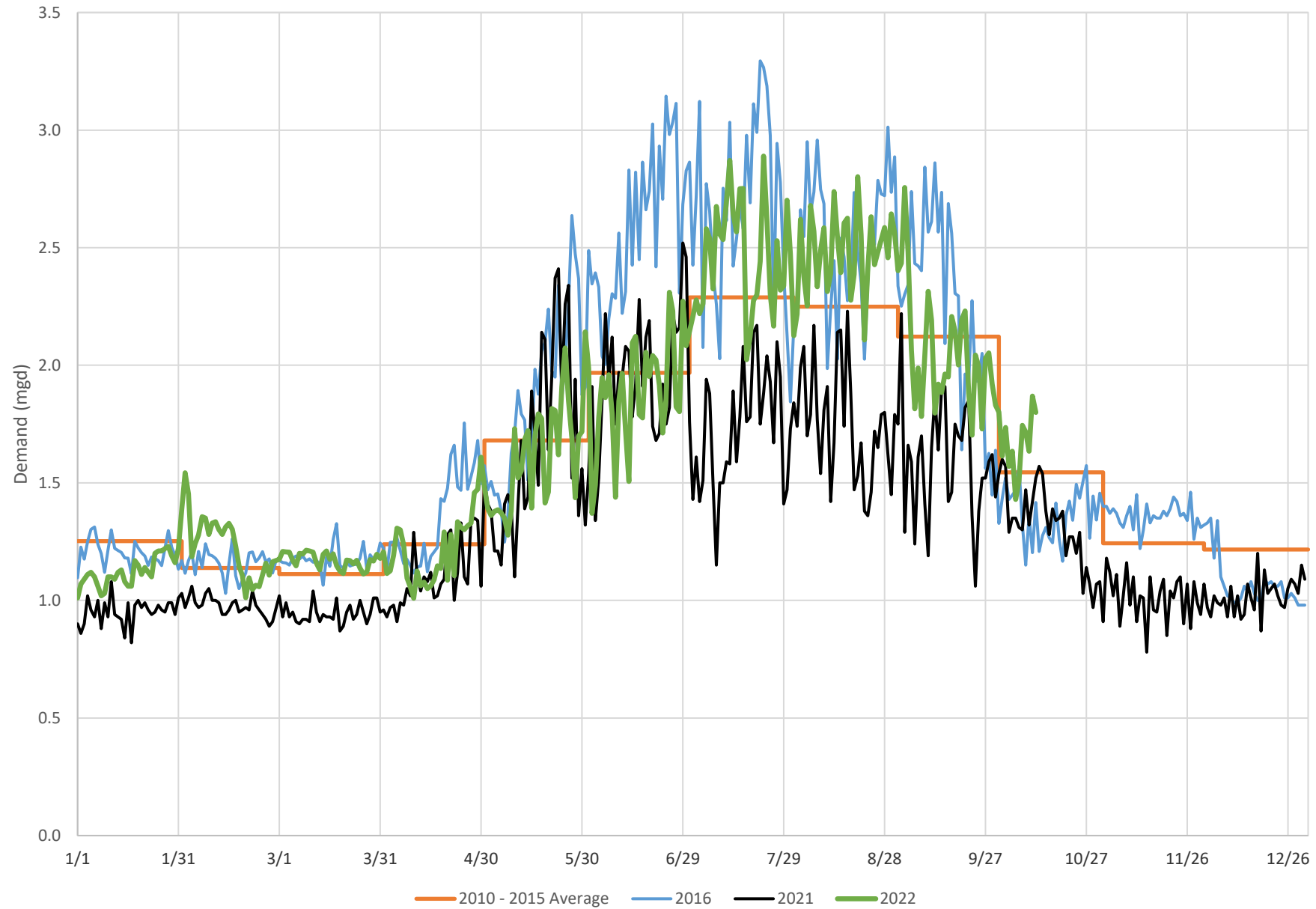


Darien Demand Summary



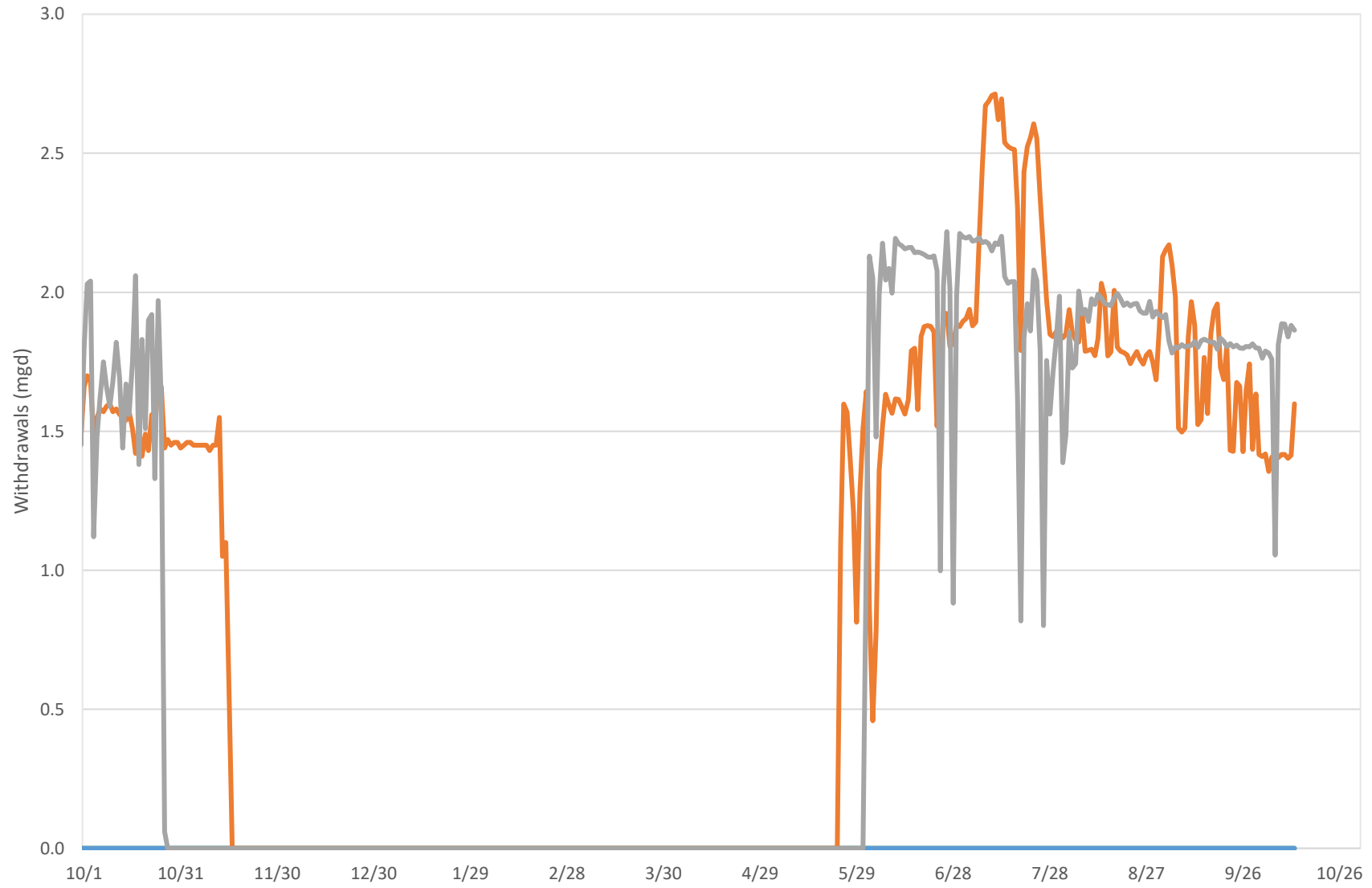


New Canaan Demand Summary





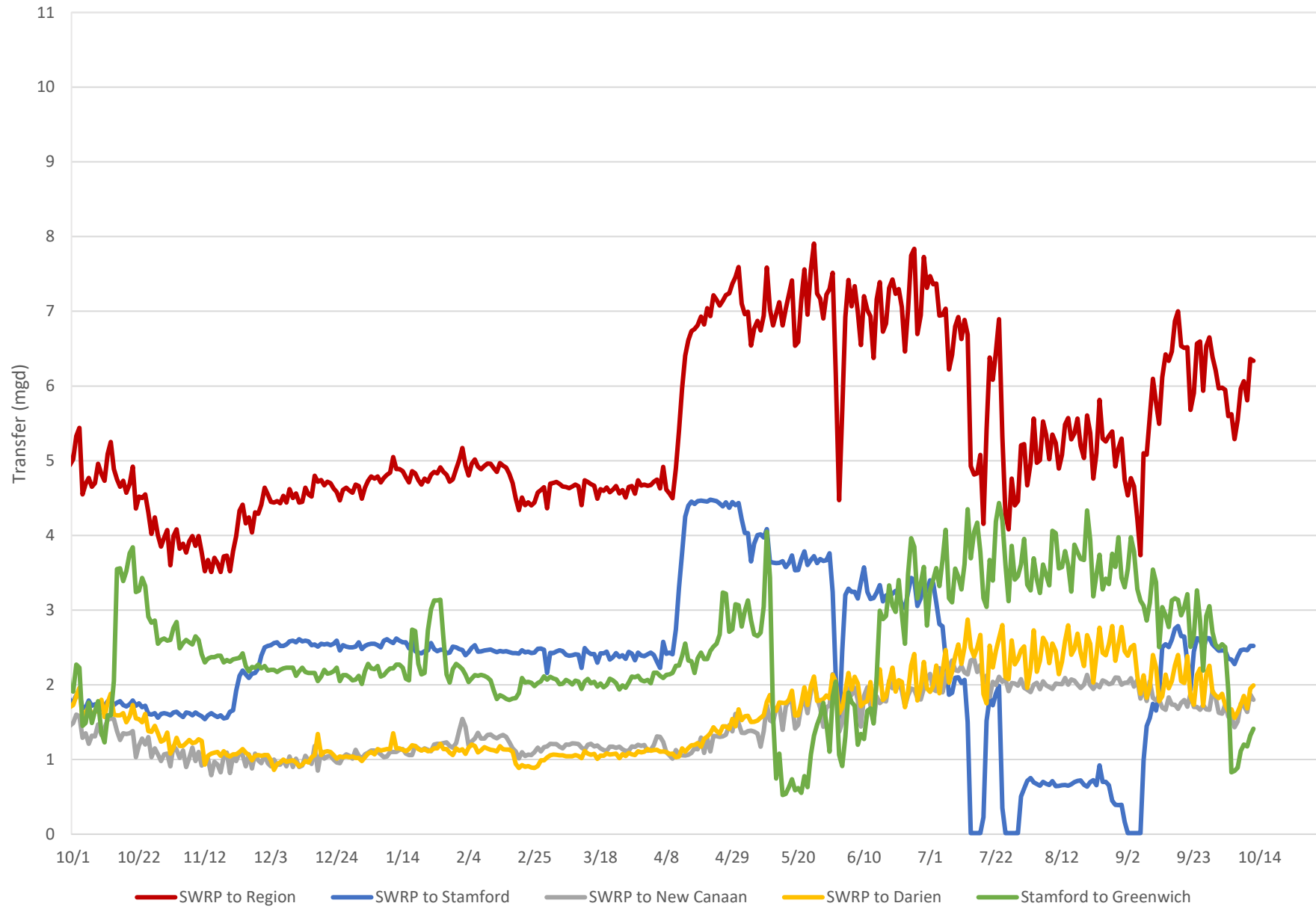
Well Withdrawals



— Rewak (Darrien) — Wire Mill (Stamford) — Canal St (Westport) — Coleytown (Westport)

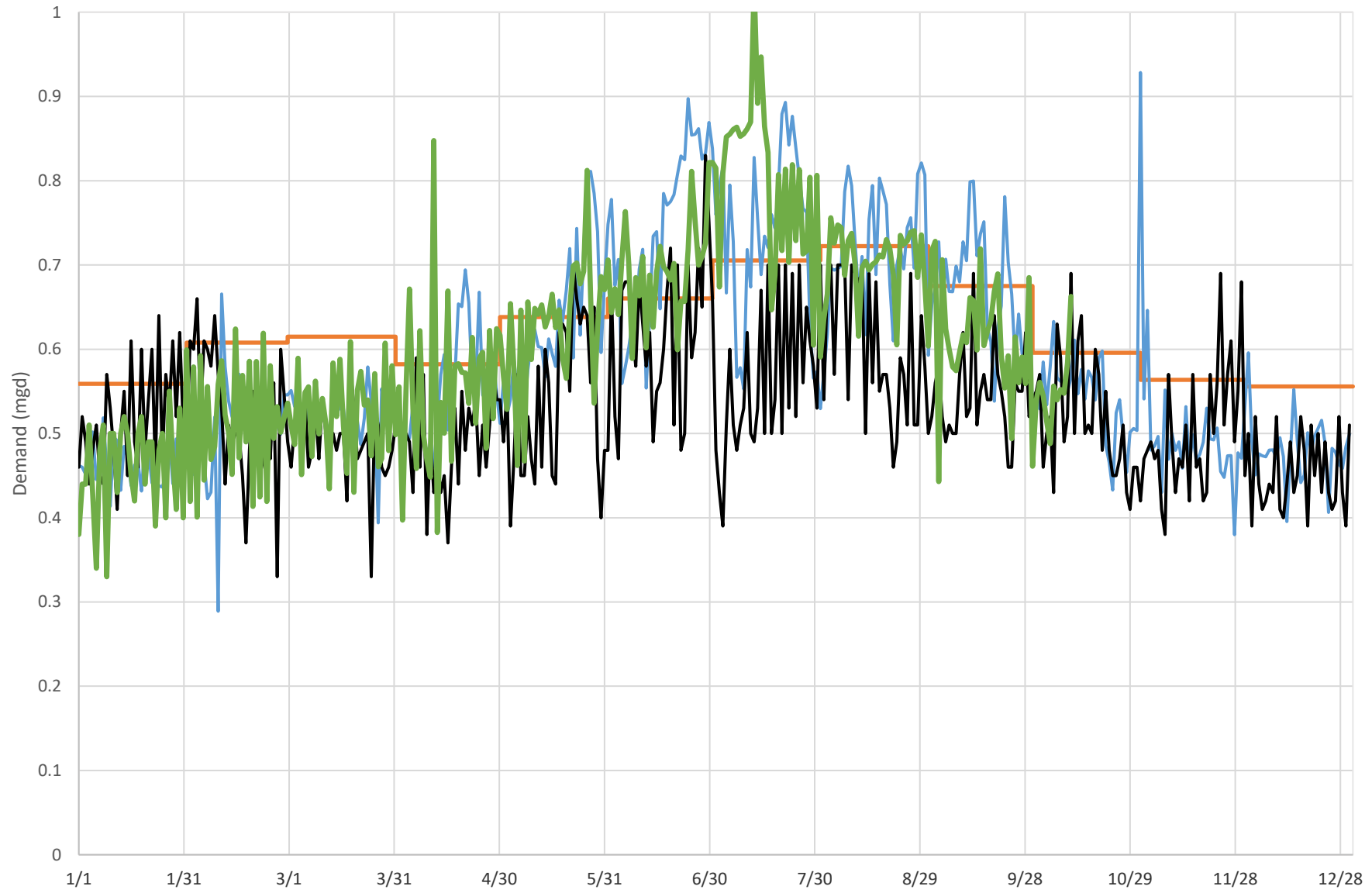


Regional Water Transfers





Town of Newtown Demand Summary

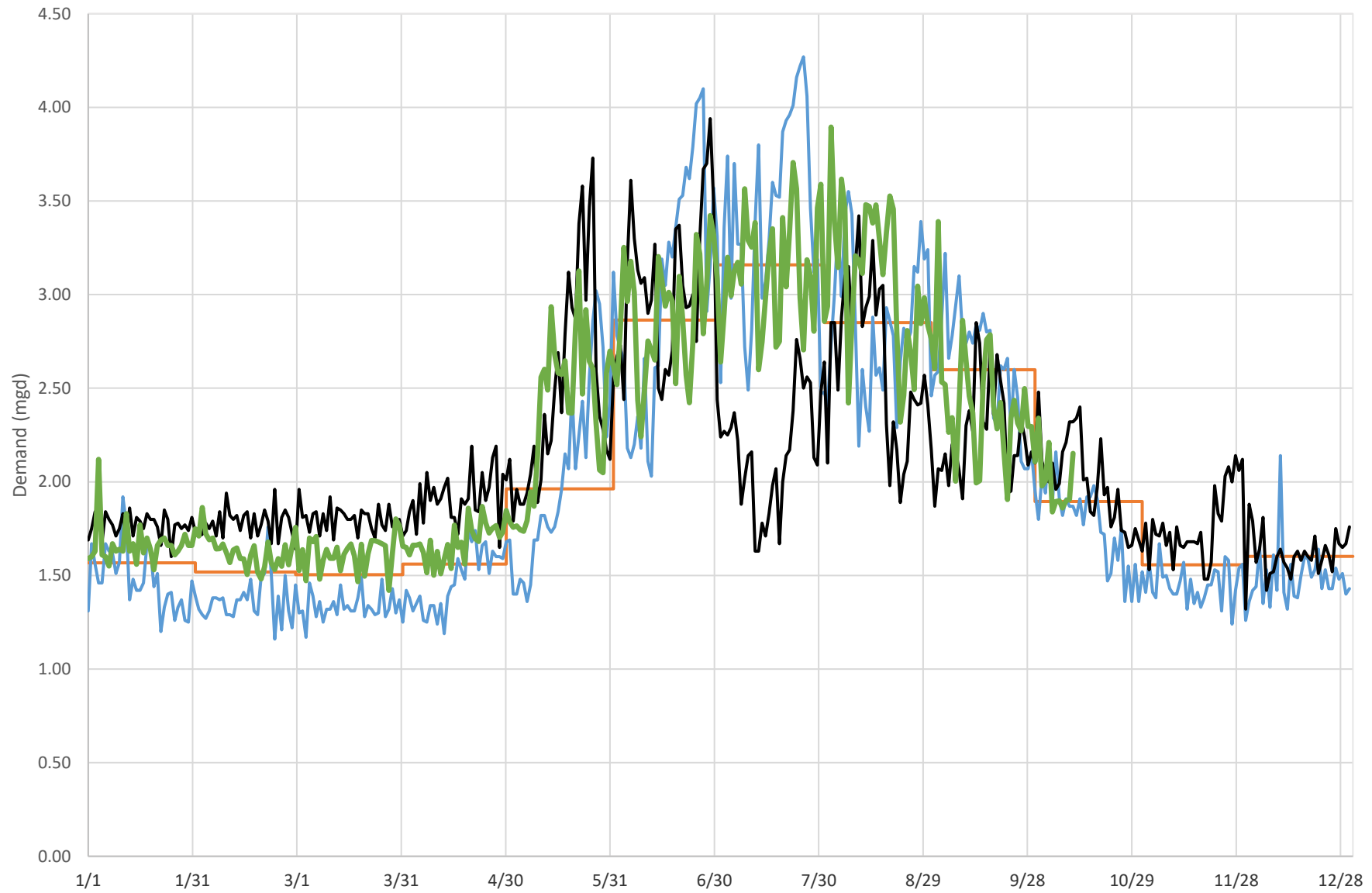


Newtown + Olmstead Systems

— 2013 - 2017 Average — 2016 — 2021 — 2022
2013-2017 average corrected for meter inaccuracy



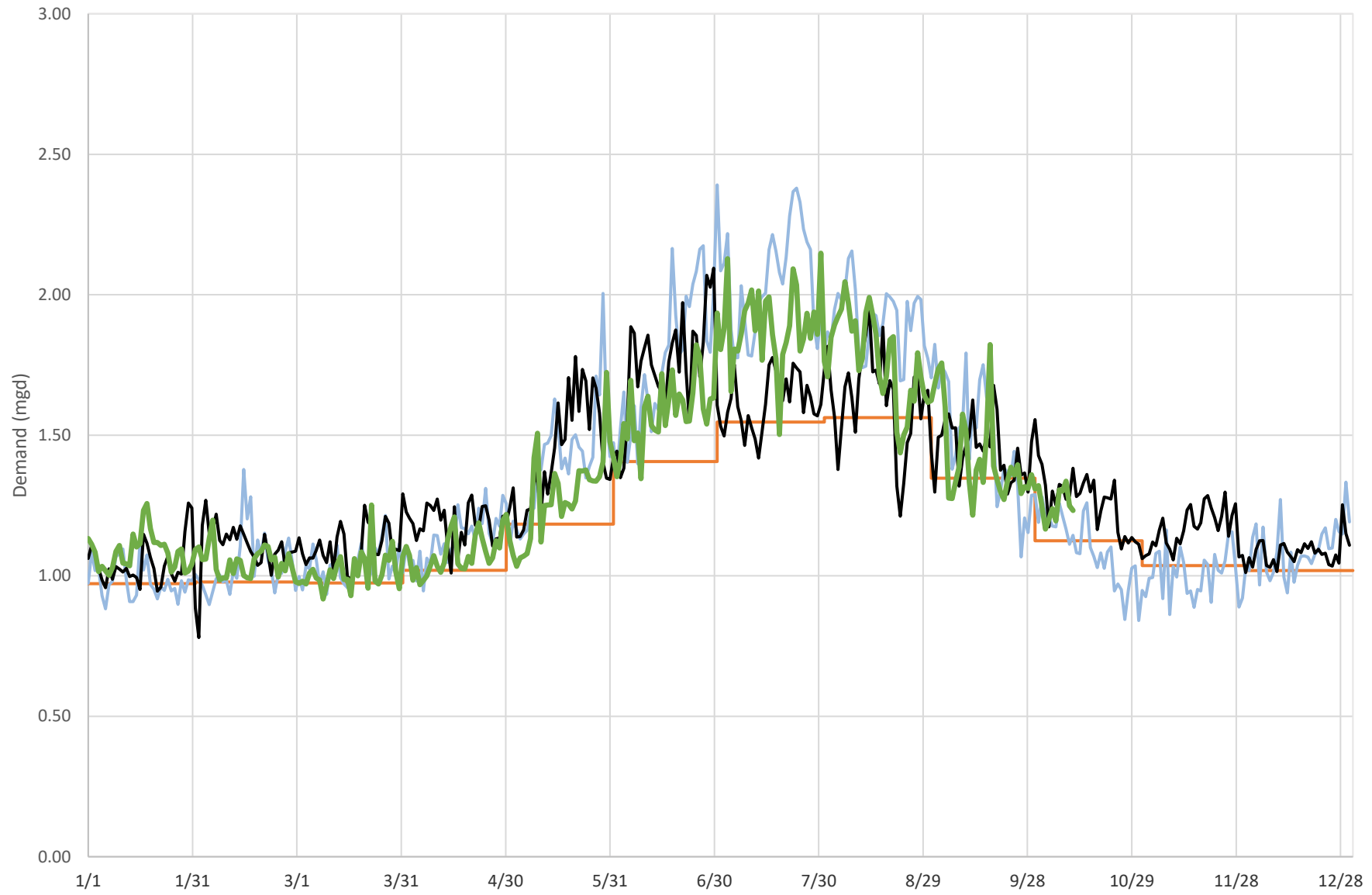
Simsbury System Demand Summary



Includes Simsbury, Granby and East Granby — 2016 - 2020 Average — 2016 — 2021 — 2022



Mystic System Demand Summary

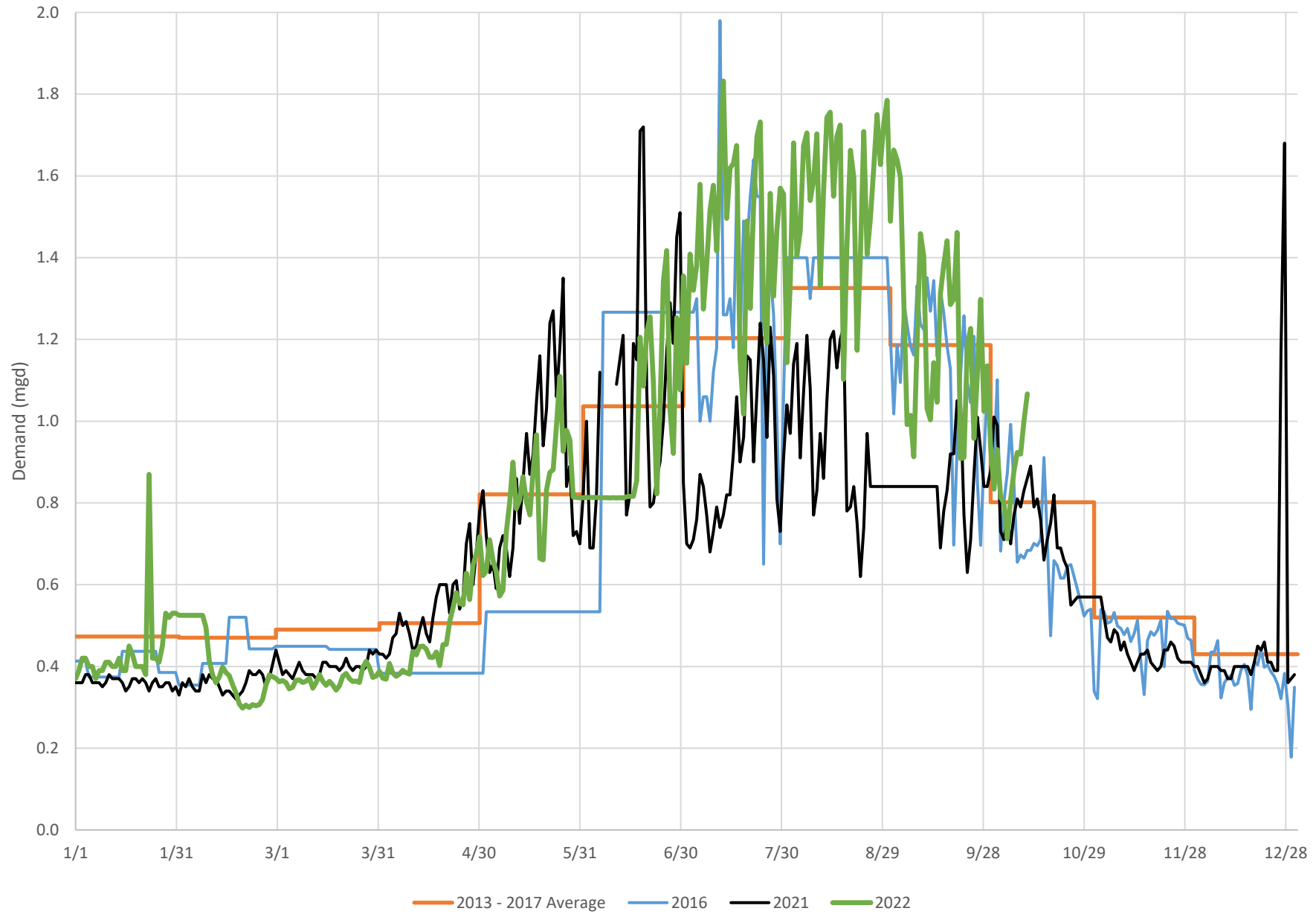


Includes Stonington and Groton

— 2017 - 2021 Average — 2016 — 2021 — 2022
2017 - 2021 average corrected for meter inaccuracy



Westport North Ave Service Area Demand Summary





Fairfield Greenfield Hill Service Area Demand Summary

