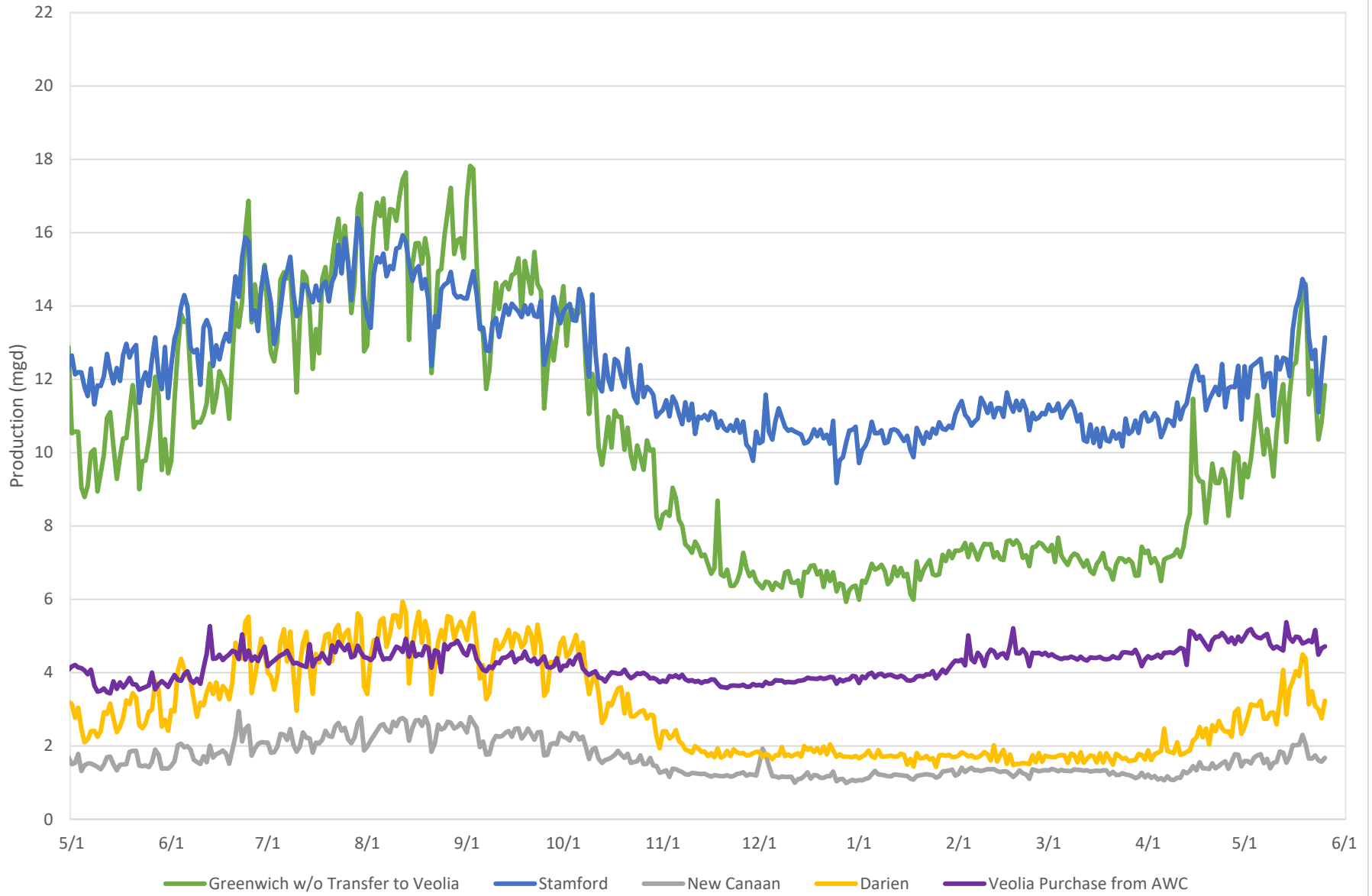


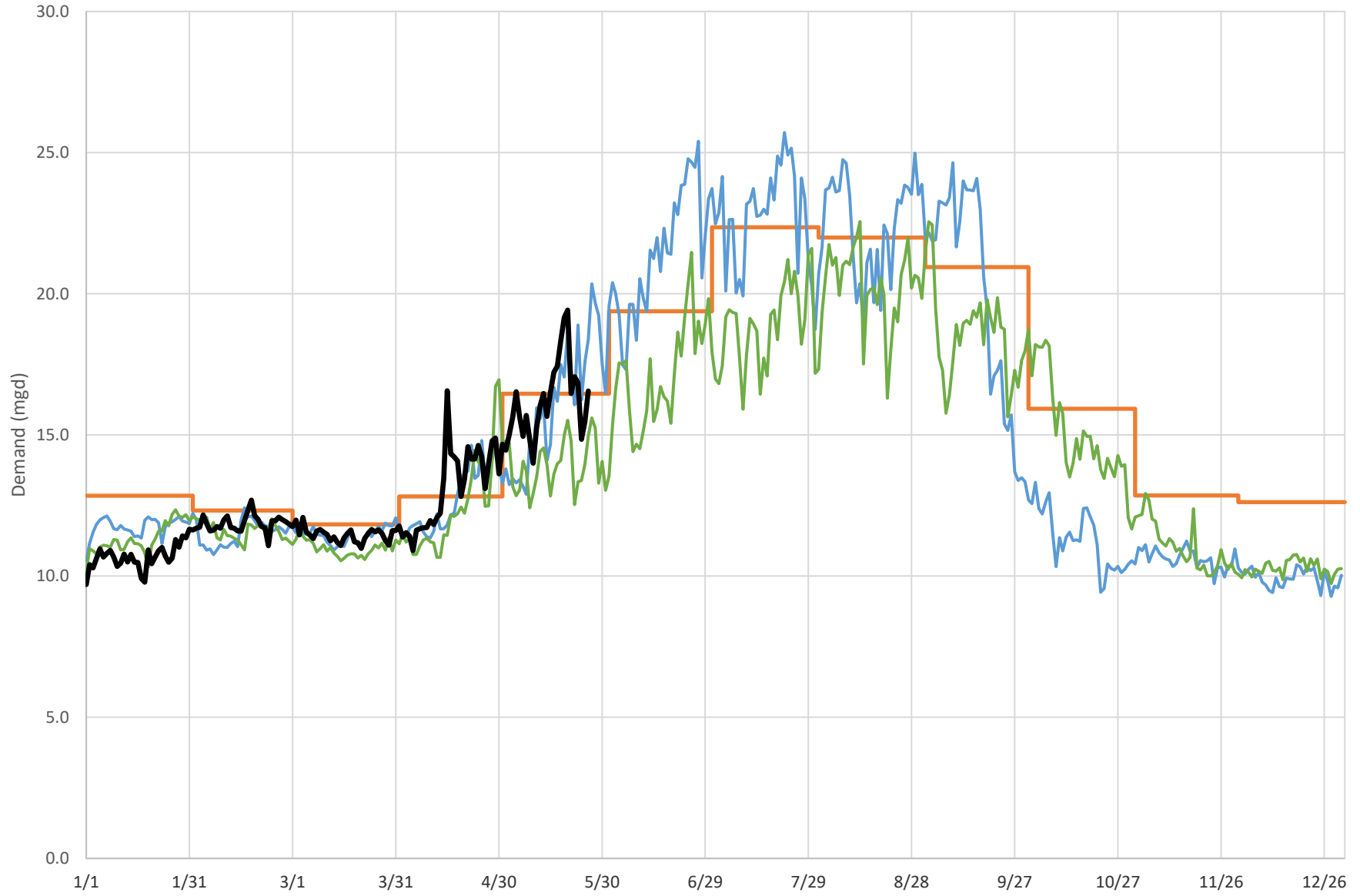


### Regional Water Demands 2025 - 2026





### Greenwich Demand Summary

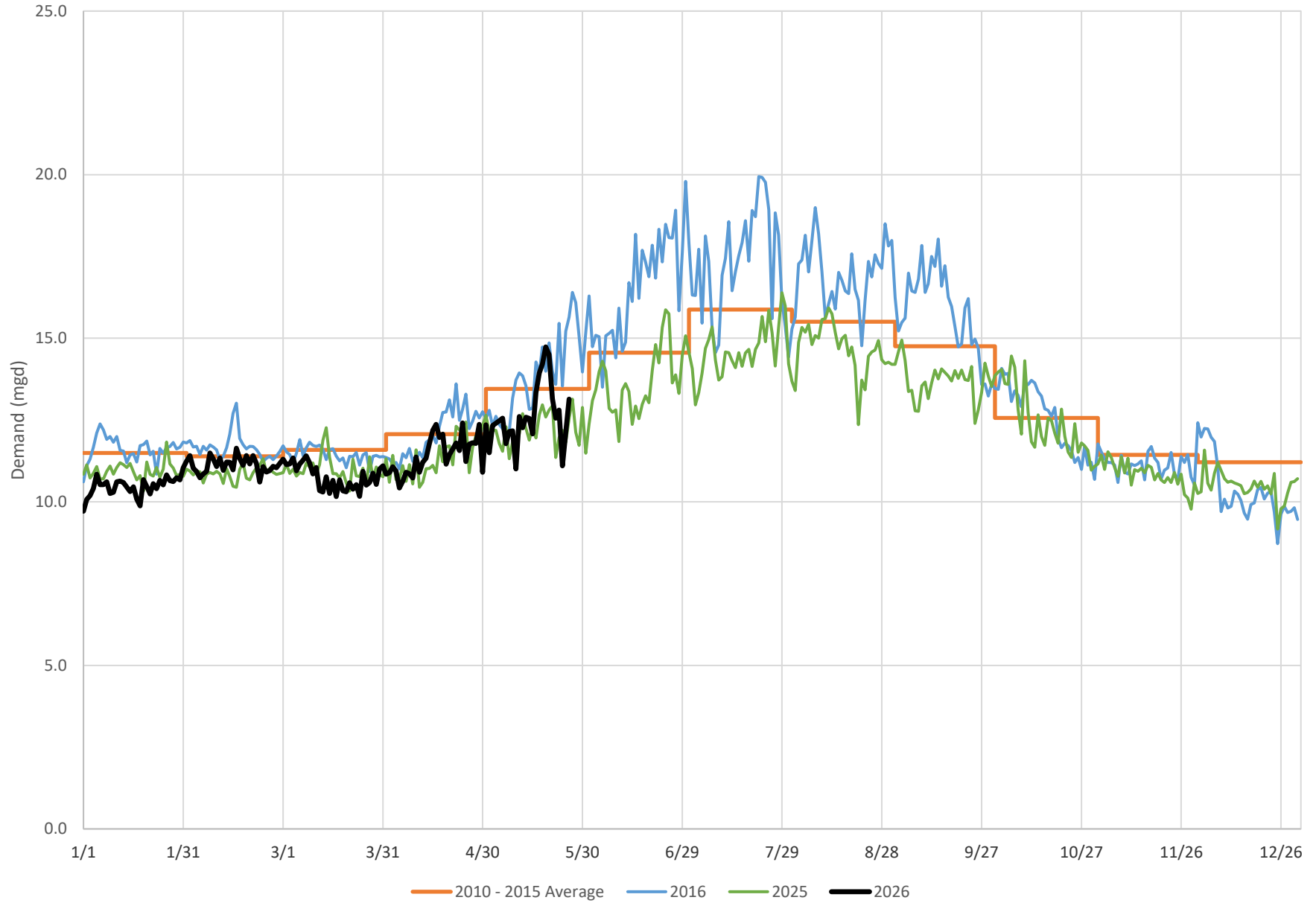


Includes transfers to Veolia

— 2010 - 2015 Average — 2016 — 2025 — 2026

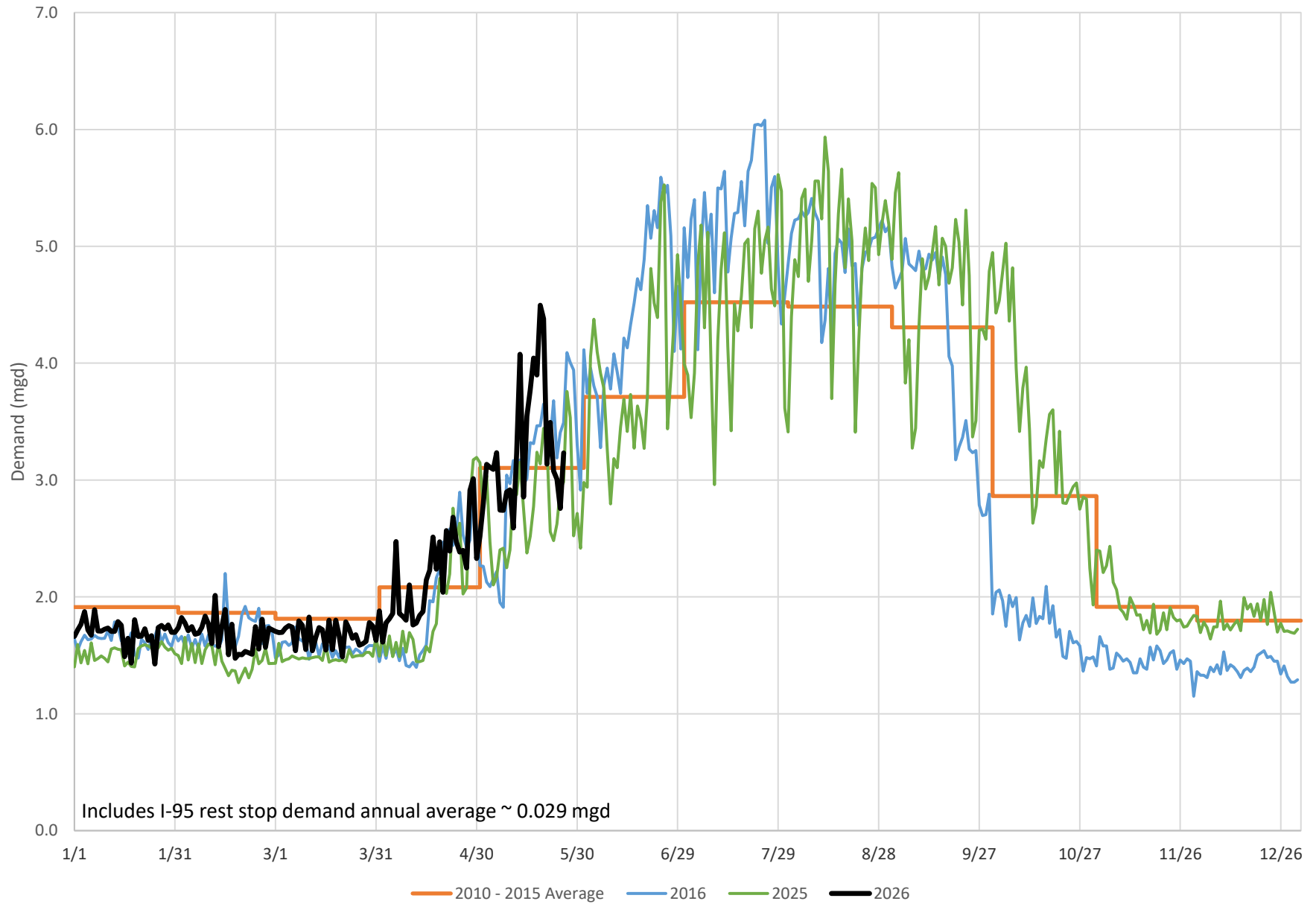


### Stamford Demand Summary



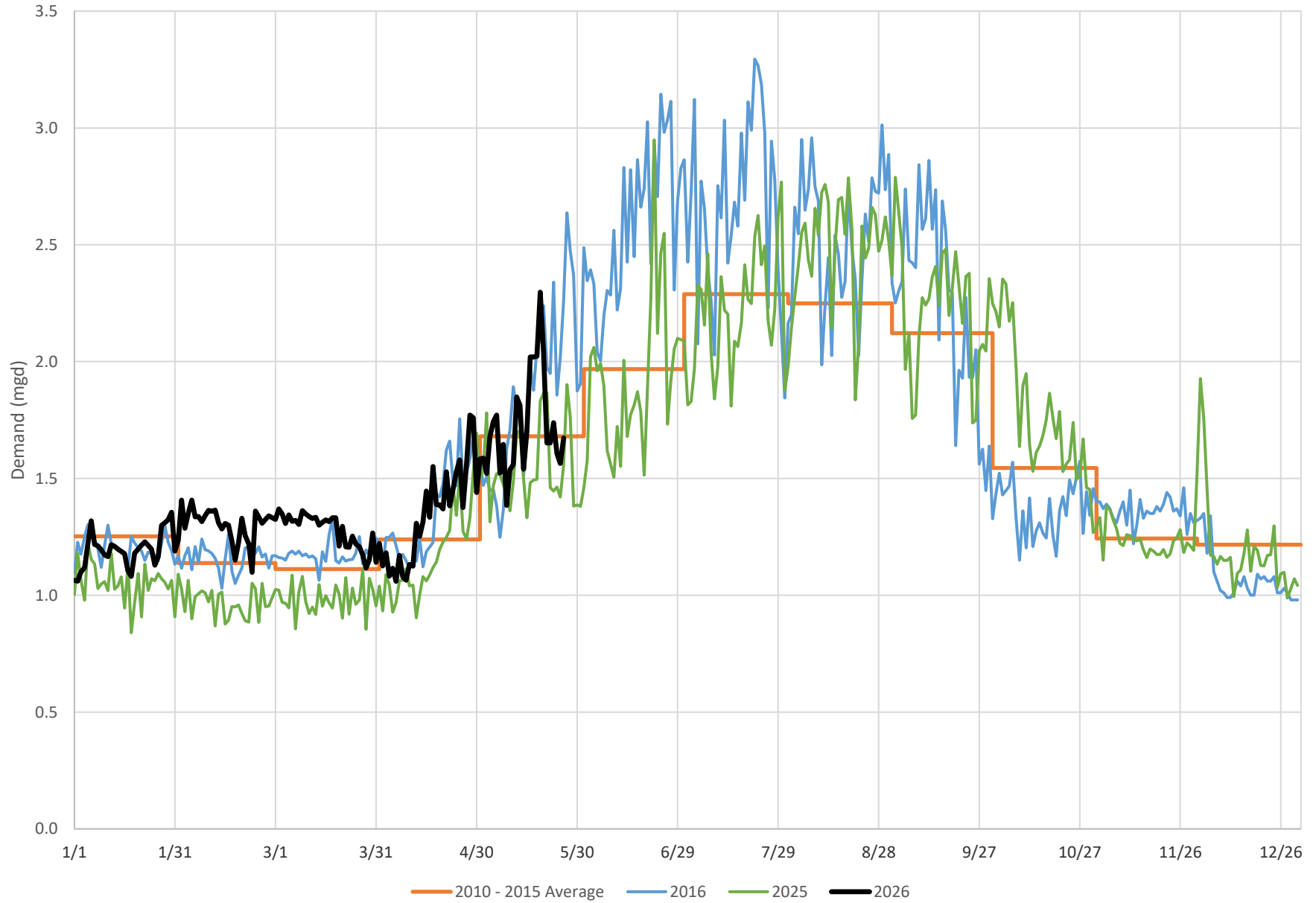


### Darien Demand Summary



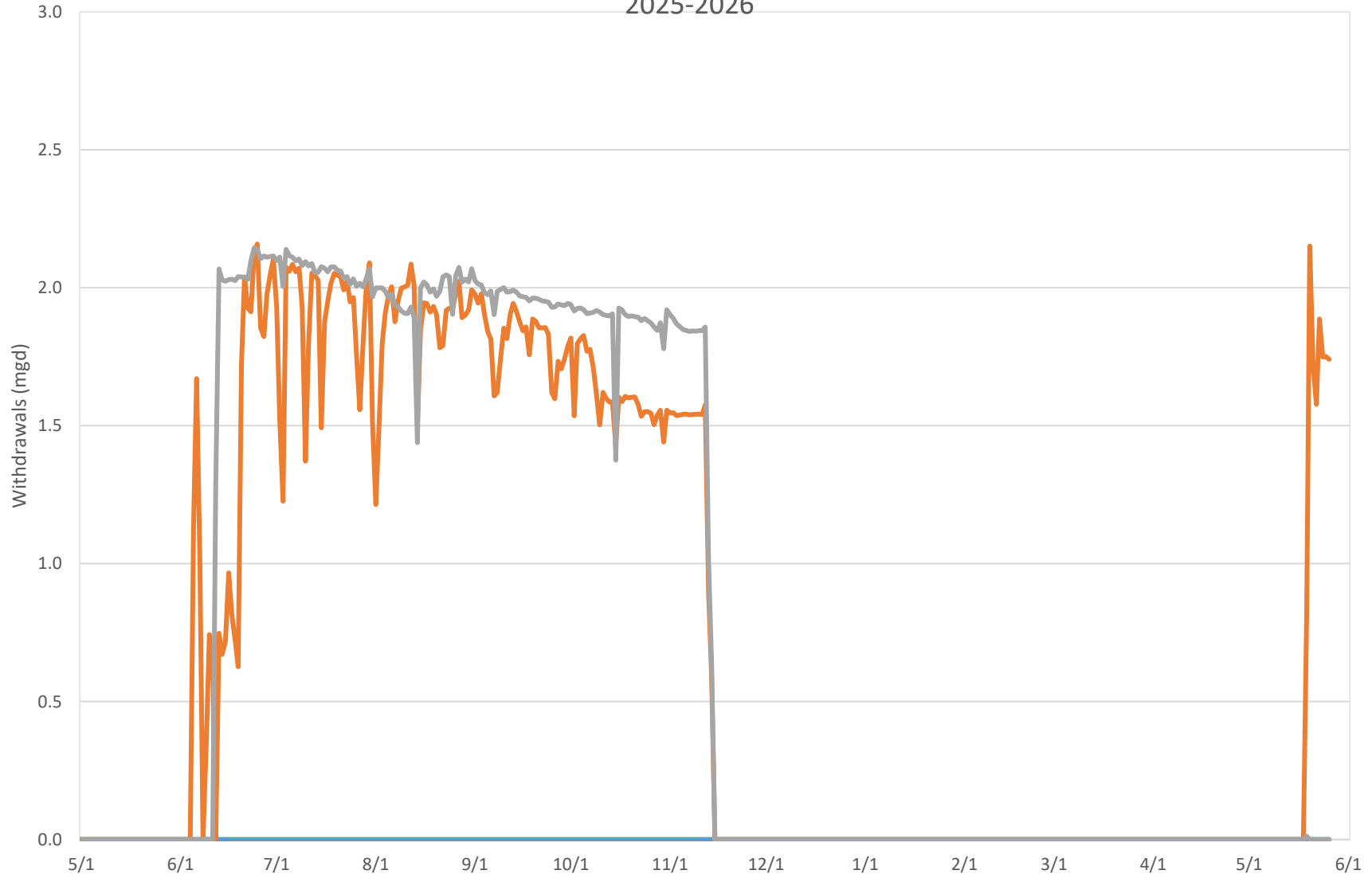


### New Canaan Demand Summary





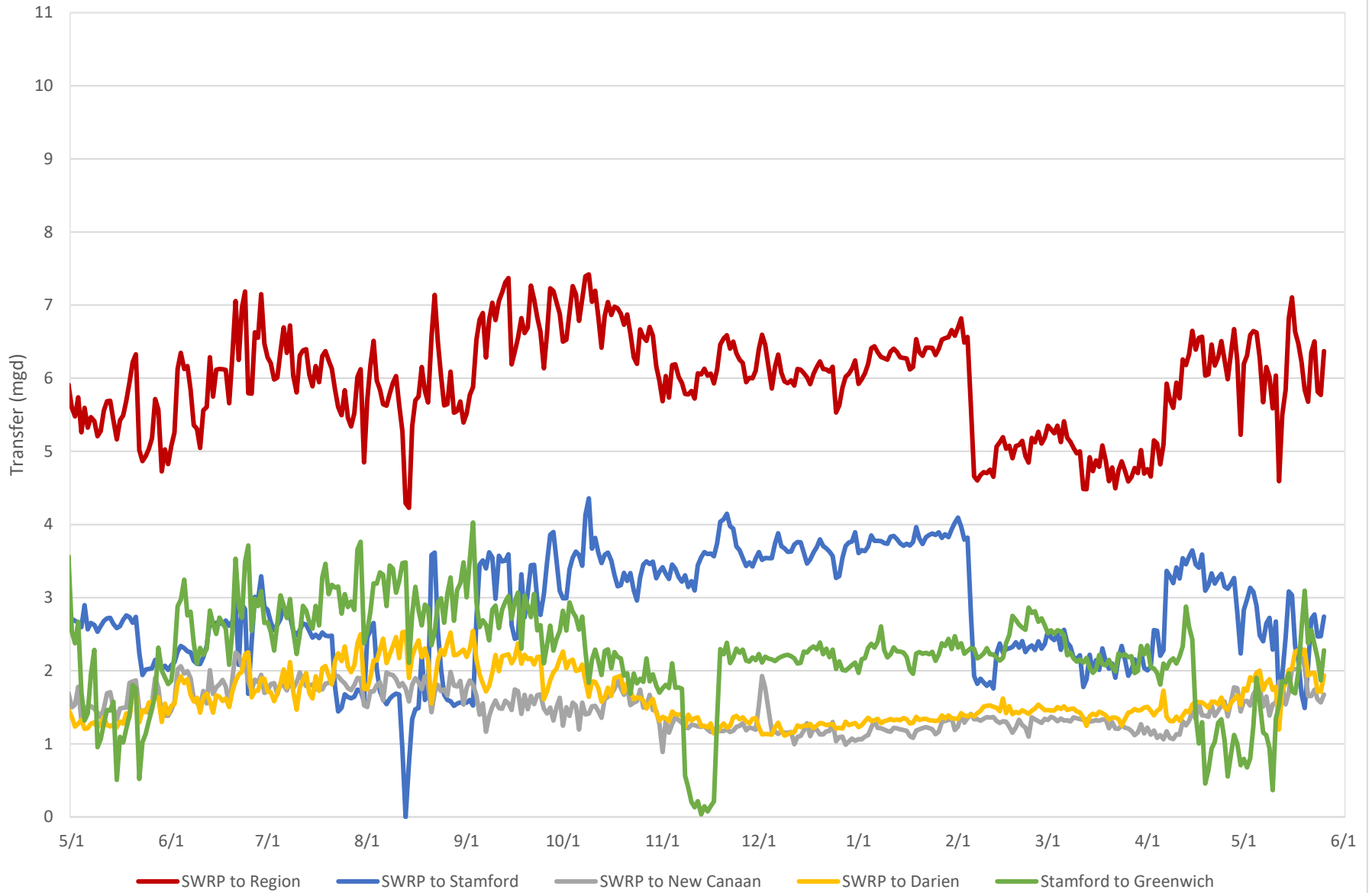
### Well Withdrawals 2025-2026



— Rewak (Darien)    — Wire Mill (Stamford)    — Canal St (Westport)    — Coleytown (Westport)

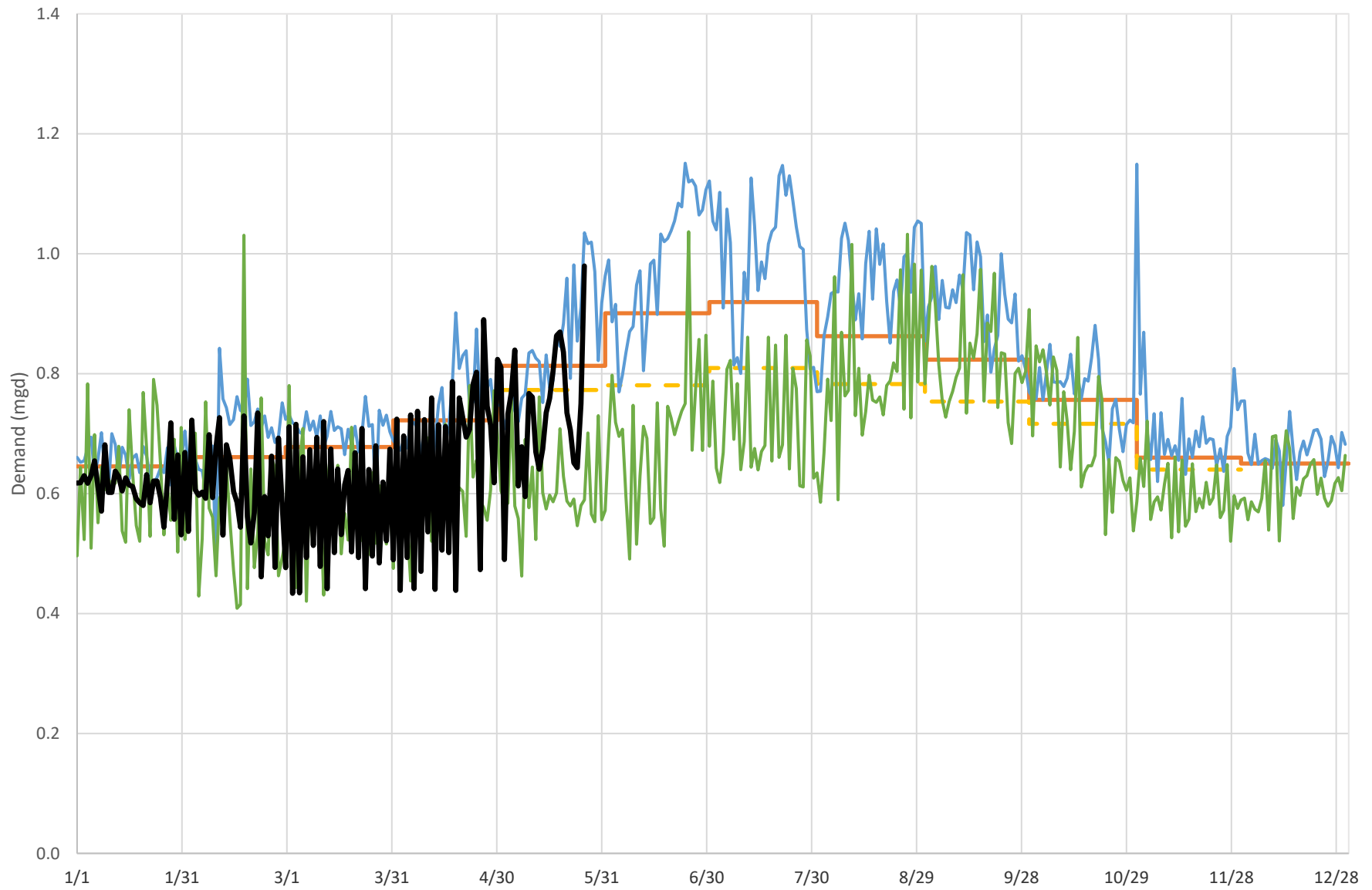


### Regional Water Transfers 2025-2026





### Newtown Regional System Demand Summary

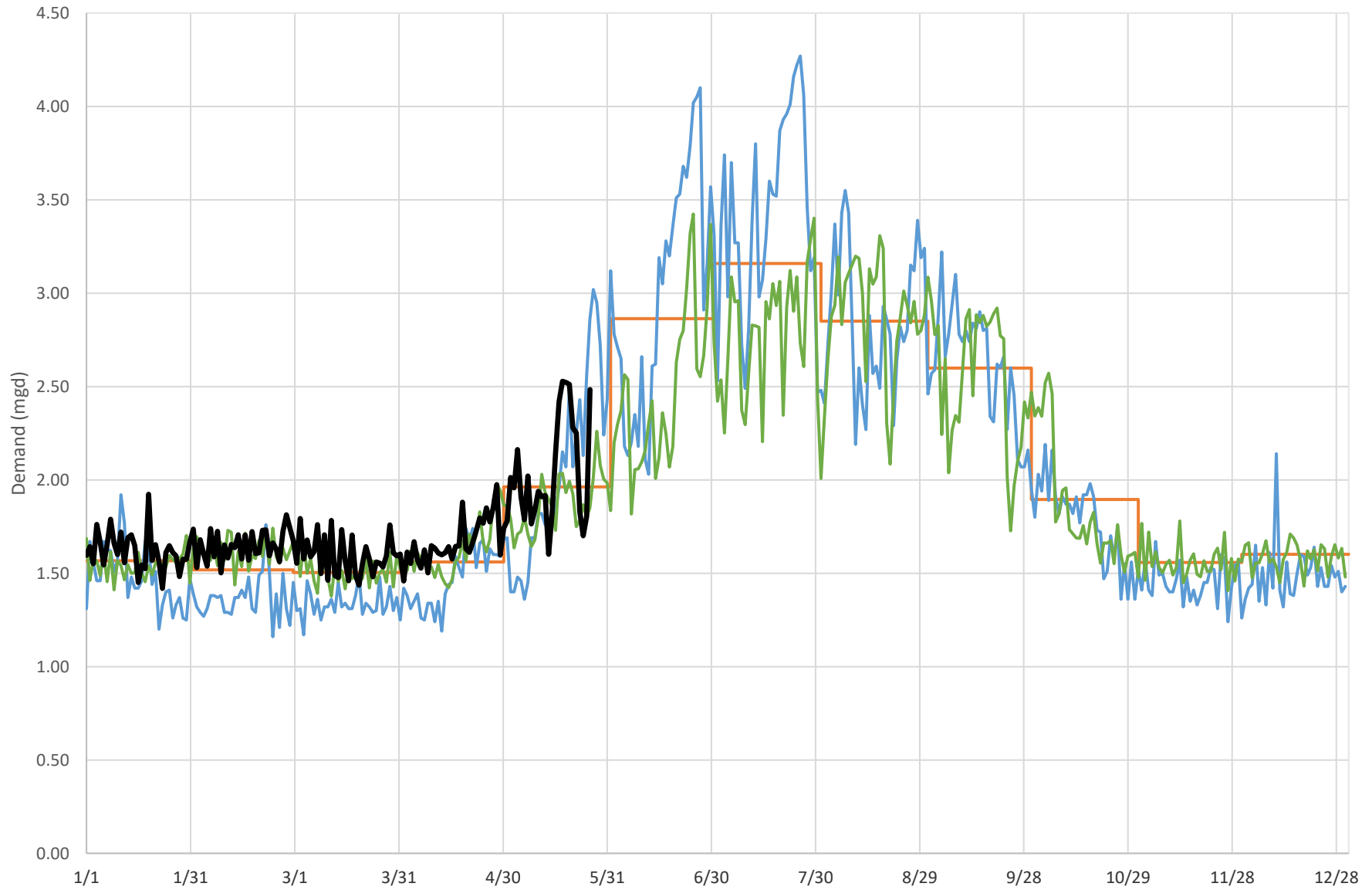


Includes Newtown and Bethel

— 2022-2024 Average    - - - Historical Avg. with 80% Reduction in Seasonal Residential Use    — 2016    — 2025    — 2026



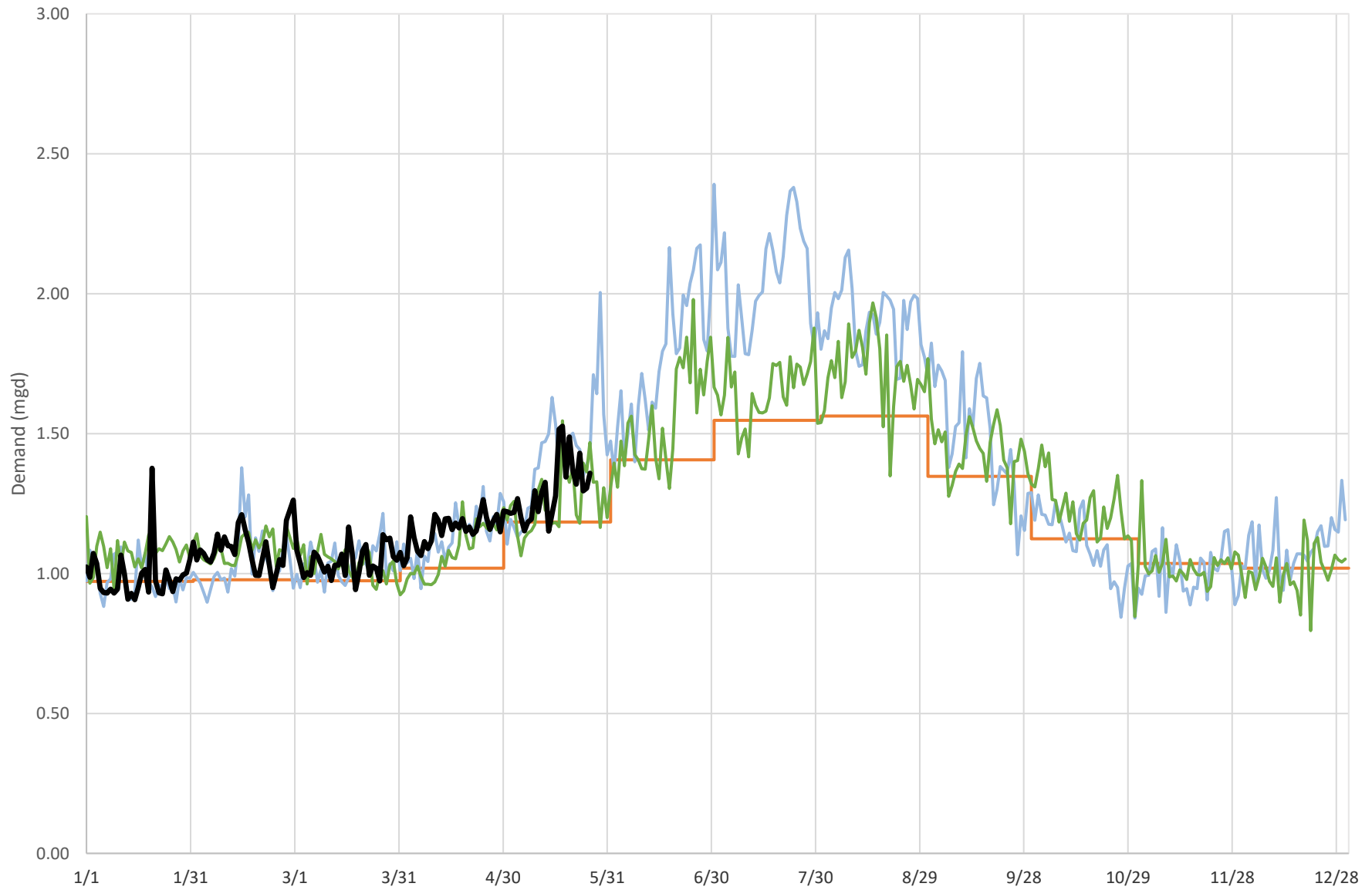
### Simsbury Regional System Demand Summary



Includes Simsbury, Granby and East Granby    2016 - 2020 Average    2016    2025    2026



### Mystic System Demand Summary

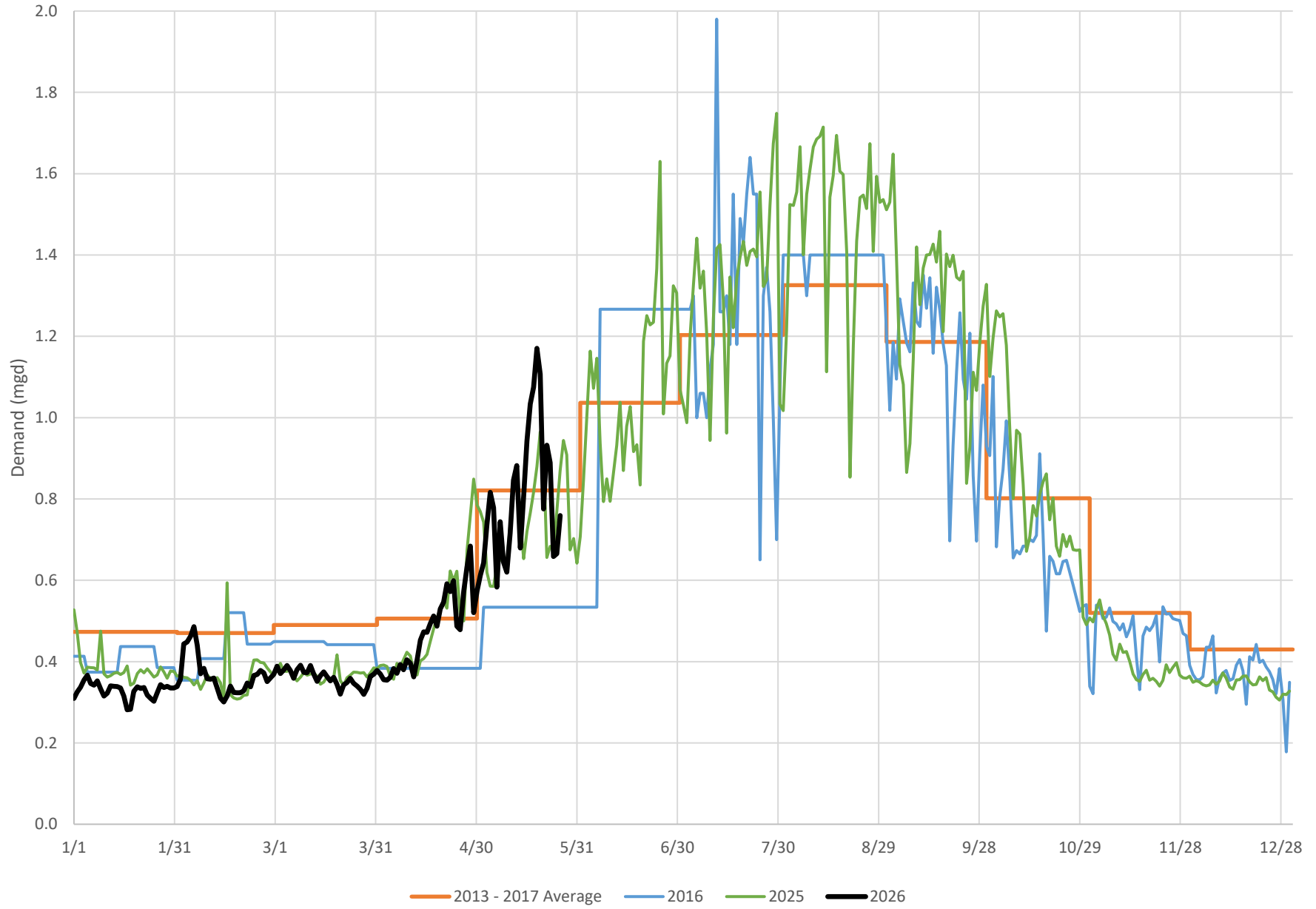


Includes Stonington and Groton

— 2017 - 2021 Average    — 2016    — 2025    — 2026  
2017 - 2021 average corrected for meter inaccuracy

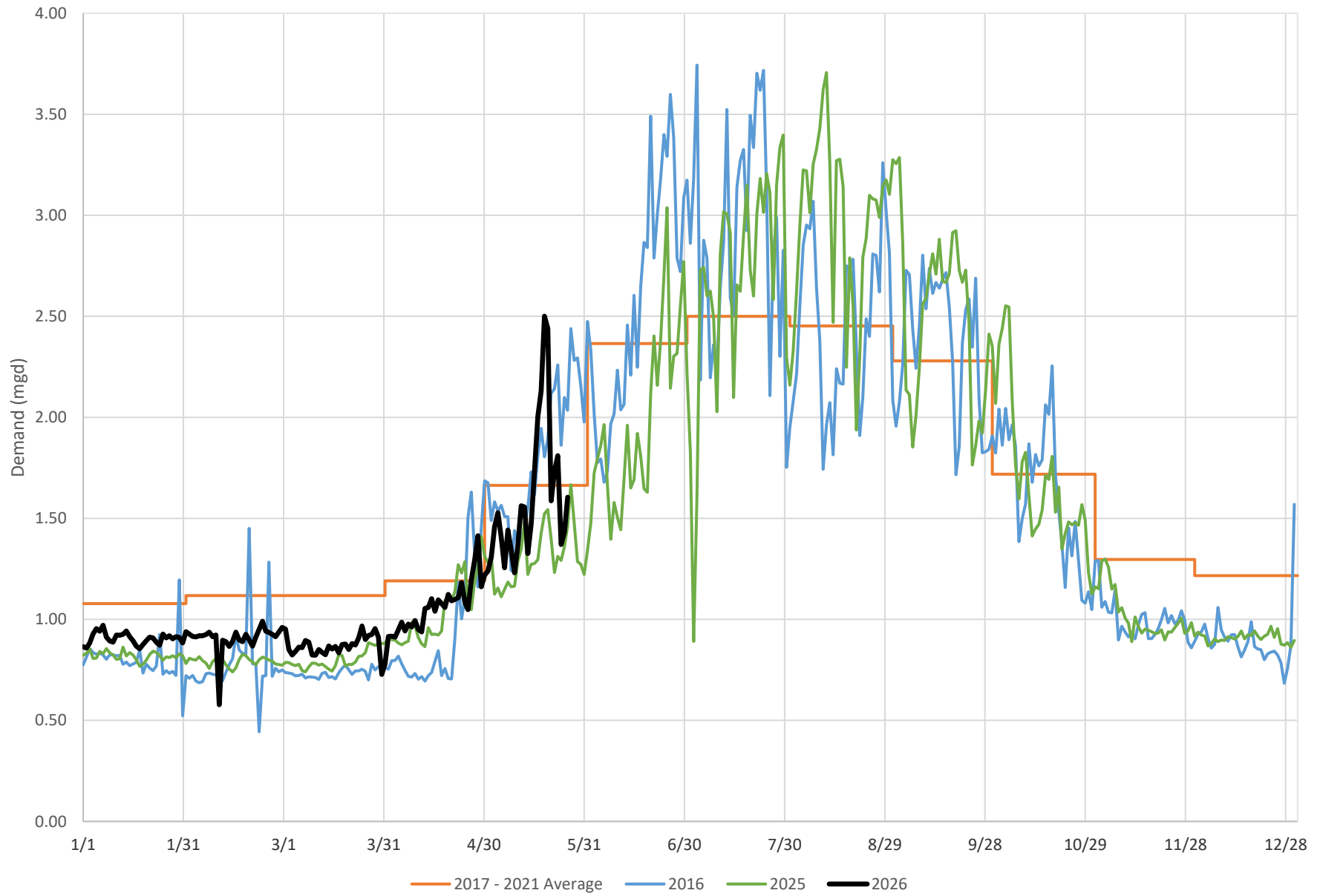


### Westport North Ave Service Area Demand Summary



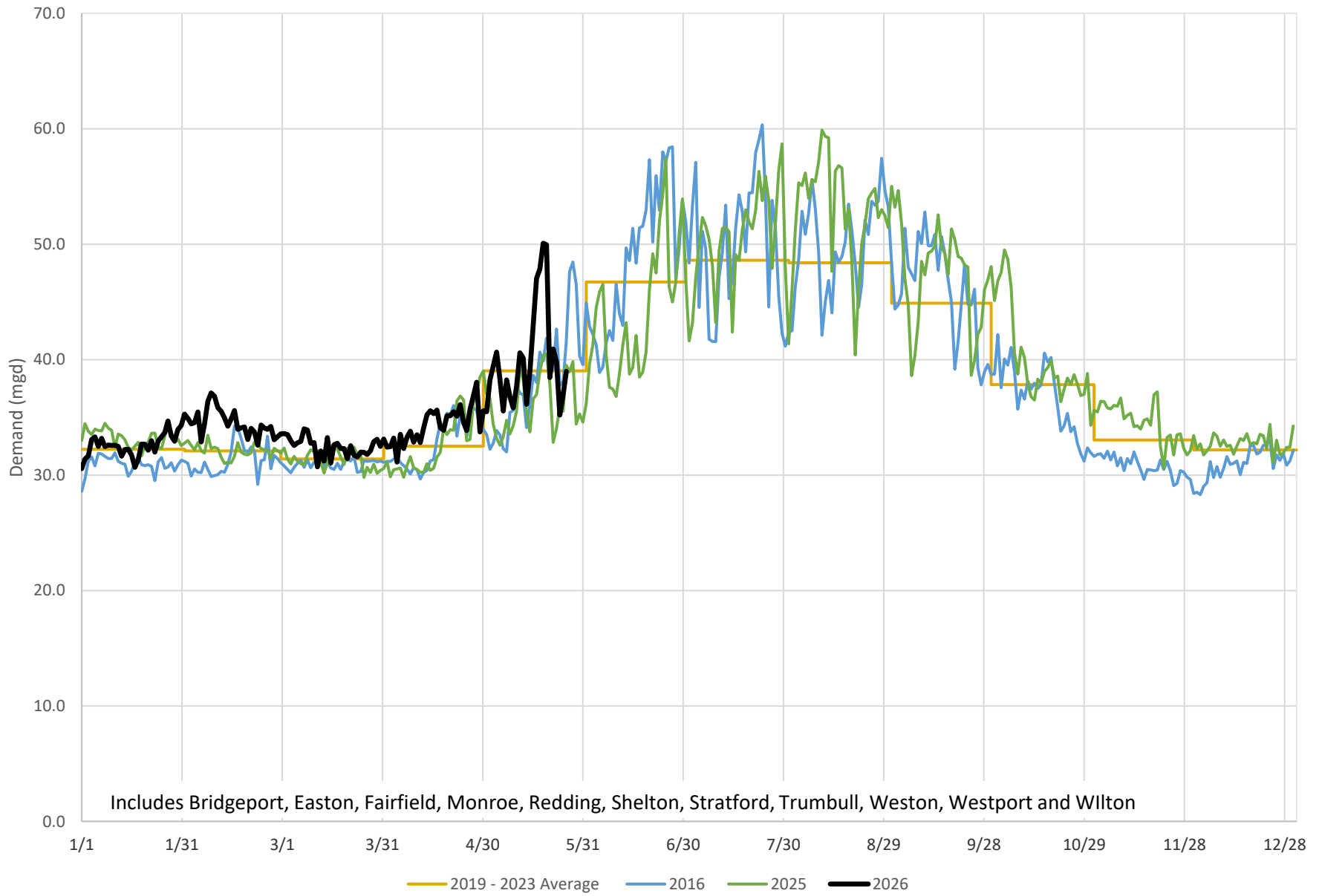


### Fairfield Greenfield Hill Service Area Demand Summary





### Eastern Fairfield County Regional System Demand Summary



Includes Bridgeport, Easton, Fairfield, Monroe, Redding, Shelton, Stratford, Trumbull, Weston, Westport and Wilton



### Town of Ridgefield Demand Summary

