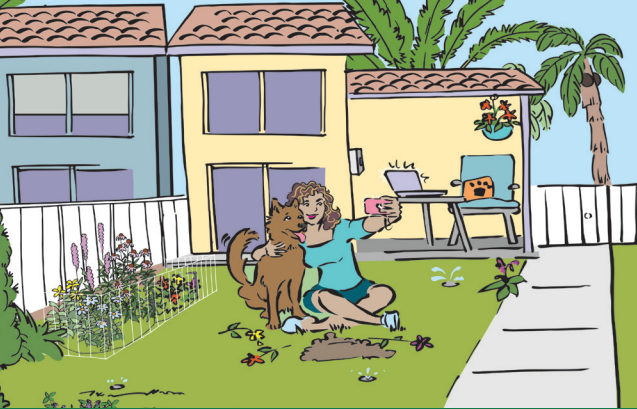


# Find



# Your



# Better



# Yard



# Find the **landscape** that fits your **lifestyle**.

## Backyard Beauty

### Landscape Lifestyle

Your yard has a variety of annuals, perennials, and vegetables. You might consider yourself a master gardener. Your landscape is lush, and you demand good irrigation performance from your system no matter the season.

### Your Better Yard Features:

- Native or drought-tolerant plants
- Hydrozoning of plants by water needs
- A microirrigation system
- A WaterSense labeled weather-based irrigation controller
- Audit by a certified irrigation pro

## Dog Digging Dilemma

You're a tech-savvy pet owner whose phone isn't the only thing that should be smart. But if your dog likes to dig up the lawn, your sprinkler system may be in disrepair and flower beds need to be safe from digging paws.

- Turf replacement with hardy plants
- WaterSense labeled irrigation controller connected to smart phone
- A sprinkler spruce-up to repair broken equipment
- Flowers in fenced-in hydrozones

## Playdate Priorities

Your yard surrounds a suburban home with high water pressure. Your yard is packed with playground equipment and always has kids over for playdates. You lead a busy life, so landscaping is low on the priority list.

- Mulch high-traffic areas
- Low-water-using plants to reduce maintenance
- WaterSense labeled spray sprinkler bodies that regulate water pressure
- WaterSense labeled irrigation controller

## Landscape Luxury

Your yard is the perfect place to entertain. You also like to travel and leave the landscape maintenance to someone else. You might be thinking about redesigning your landscape and/or irrigation system.

- Certified irrigation system designer
- Hydrozoning plants by water needs
- A microirrigation system
- WaterSense labeled spray sprinkler bodies
- A WaterSense labeled irrigation controller

Make your yard more attractive, functional, and water-efficient using some of the features listed on these pages. The illustrations, descriptions, and links on the following pages can help you get started on your better yard.

	Landscape Lifestyle	Your Better Yard Features:
Family Fun	Your yard is the envy of everyone on the block, thanks to meticulous lawn maintenance. You are picky about what you plant and when to water, but you also coach kids’ sports and use the backyard for practice.	<ul style="list-style-type: none"><li>• WaterSense labeled spray sprinkler bodies</li><li>• A sprinkler spruce-up to check the system for leaks</li><li>• A soil moisture sensor to determine when water is needed</li><li>• A certified irrigation auditor to enhance efficiency</li></ul>
Low-Maintenance Living	You are a busy working parent who wants to spend time playing with the kids on the weekend rather than working on the lawn. Instead of an in-ground sprinkler system, you water with a hose hooked up to a sprinkler.	<ul style="list-style-type: none"><li>• Turf replacement with drought-tolerant plants</li><li>• Plants in hydrozones based on water needs</li><li>• Drip irrigation, such as a soaker hose</li><li>• Wise watering/avoiding mid-day sun</li></ul>
Urban Oasis	You are the do-it-yourself type who like to grow your own vegetables. This small backyard or balcony plot can be a sustainable source of organic produce and flowers.	<ul style="list-style-type: none"><li>• Native flowers</li><li>• Plants in hydrozones based on water needs</li><li>• Mulch to maintain healthy soil and plants</li><li>• Drip irrigation/soil moisture sensor</li></ul>
Community Plot	You are a community gardener who enjoys teaching kids how to plant and grow food in raised beds. Your plot is next to a school or building with plenty of precipitation.	<ul style="list-style-type: none"><li>• Drought-tolerant plants native to the region</li><li>• Beds arranged in hydrozones by water needs</li><li>• Rain barrel to collect irrigation water</li><li>• Drip irrigation in raised beds</li></ul>





Community Plot

Urban Oasis

Family Fun

Playdate Priorities

Low-Maintenance Living

Backyard Beauty

Dog-Digging Dilemma

Landscape Luxury

- Key to Your Better Yard**
- 1. Sprinkler Spruce-Up
  - 2. WaterSense Labeled Irrigation Controller
  - 3. WaterSense Labeled Spray Sprinkler Bodies
  - 4. Soil Moisture Sensor
  - 5. Irrigation Audit by a Certified Professional
  - 6. Irrigation Design by a Certified Professional
  - 7. Hydrozoning Plants by Water Needs
  - 8. Turf Replacement/Mulch
  - 9. Native/Hardy/Drought-Tolerant Plants
  - 10. Microirrigation/Drip Irrigation
  - 11. Rain Barrel to Collect Irrigation Water
  - 12. Wise Watering Techniques



# Ideas for Your Better Yard



## 1. Sprinkler Spruce-Up

Every spring, WaterSense reminds homeowners to inspect sprinkler systems for leaks and broken sprinkler heads, connect all system components securely, and direct sprinklers towards landscaping/away from pavement.

## 2. WaterSense Labeled Irrigation Controller

These smart irrigation controllers use local weather data and soil conditions to adjust watering schedules, so plants get water when and how long they need it. Replacing a standard clock-timer system with a WaterSense labeled controller can save more than 7,000 gallons of water per year! Learn more at <https://www.epa.gov/watersense/irrigation-controllers>.



## 3. WaterSense Labeled Spray Sprinkler Bodies

When water pressure is higher than optimal for a sprinkler system, it can result in misting, fogging, and uneven coverage. WaterSense labeled spray sprinkler bodies have integral pressure regulation and can reduce water waste by providing a constant flow at the sprinkler nozzle.



## 4. Soil Moisture Sensor

These sensors detect the level of moisture in the soil and override scheduled irrigation when plants don't need water. They help reduce water waste and promote plant health by preventing overwatering.

## 5. Irrigation Audit by a Certified Professional

Irrigation professionals certified by a WaterSense labeled program have demonstrated their knowledge of water-efficient techniques and technologies. They can inspect your irrigation system to ensure it functions properly and will offer suggestions to make it more water-efficient.



## 6. Irrigation Design by a Certified Professional

WaterSense also labels certification programs for designers and installers who can customize your irrigation system to best suit your landscape and maximize its efficiency. Find a certified irrigation designer, installer, or auditor at <https://lookforwatersense.epa.gov/pros/>.

Learn more about the water-saving technologies and techniques to incorporate in your better yard, using the key on the previous pages and the numbers from your landscape lifestyle.



### 7. Hydrozoning Plants by Water Needs

Hydrozoning refers to grouping plants in zones based on their watering needs. This practice helps decrease water waste and protects plants from both underwatering and overwatering.



### 8. Turf Replacement/Mulch

Turf often requires more watering than other types of plants and groundcover. Mulch reduces evaporation, meaning soil retains water longer and plants require less frequent watering. Mulch also protects plants from weed growth, soil erosion, and fluctuating soil temperature.



### 9. Native/Hardy/Drought-Tolerant Plants

Native plants are acclimated to your local climate and soil conditions and require little additional watering than normal rainfall. Drought-tolerant plants thrive with little water, even in regions with drier climates. Hardy plants can survive under intense climate conditions.



### 10. Microirrigation/Drip Irrigation

Microirrigation is a low-pressure, low-flow-rate type of irrigation that delivers water directly to the roots of plants, which reduces evaporation, runoff, and overwatering. Drip irrigation is a form of microirrigation that drips water slowly, over a long period of time.

### 11. Rain Barrel to Collect Irrigation Water

Rain barrels can collect rainwater to be reused for landscape irrigation, car washing, and other non-potable uses. You can direct your downspout into a barrel or use a commercial rooftop collection barrel.

### 12. Wise Watering Techniques

Even if you don't have an irrigation system, watering in the mornings or evenings helps prevent evaporation; avoid watering in the middle of the day when temperatures are hottest. For more ways to save while watering, visit [www.epa.gov/watersense/watering-tips](http://www.epa.gov/watersense/watering-tips).



# More **Resources** to Create **Your Better Yard**

## Sprinkler Spruce-Up:

- [www.epa.gov/watersense/sprinkler-spruce-up](http://www.epa.gov/watersense/sprinkler-spruce-up)
- [www.epa.gov/sites/production/files/2020-04/documents/ws-outdoor-landscaping-find-it-flag-it-audit-checklist.pdf](http://www.epa.gov/sites/production/files/2020-04/documents/ws-outdoor-landscaping-find-it-flag-it-audit-checklist.pdf)

## Smart Irrigation Technologies:

- [www.epa.gov/watersense/watering-tips#SmarterTech](http://www.epa.gov/watersense/watering-tips#SmarterTech)
- [www.epa.gov/sites/production/files/2020-05/documents/ws-products-irrigation-outdoor-wbic-mini-report.pdf](http://www.epa.gov/sites/production/files/2020-05/documents/ws-products-irrigation-outdoor-wbic-mini-report.pdf)
- [www.epa.gov/watersense/spray-sprinkler-bodies](http://www.epa.gov/watersense/spray-sprinkler-bodies)
- [www.epa.gov/sites/production/files/2020-03/documents/ws-products-ssb-minireport.pdf](http://www.epa.gov/sites/production/files/2020-03/documents/ws-products-ssb-minireport.pdf)
- [www.epa.gov/watersense/soil-moisture-based-control-technologies](http://www.epa.gov/watersense/soil-moisture-based-control-technologies)



## Certified Irrigation Professionals:

- [www.epa.gov/watersense/irrigation-pro](http://www.epa.gov/watersense/irrigation-pro)

## Microirrigation:

- [www.epa.gov/watersense/microirrigation](http://www.epa.gov/watersense/microirrigation)
- [www.epa.gov/sites/production/files/2018-05/documents/ws-outdoors-microirrigation-homeownerguide.pdf](http://www.epa.gov/sites/production/files/2018-05/documents/ws-outdoors-microirrigation-homeownerguide.pdf)

## Hydrozoning, Native Plants, and Mulch:

- [www.epa.gov/watersense/landscaping-tips#plants](http://www.epa.gov/watersense/landscaping-tips#plants)
- [www.epa.gov/watersense/landscaping-tips#Soil](http://www.epa.gov/watersense/landscaping-tips#Soil)
- [www.epa.gov/watersense/what-plant](http://www.epa.gov/watersense/what-plant)
- [www.epa.gov/sites/production/files/2017-01/documents/ws-outdoor-water-efficient-landscaping.pdf](http://www.epa.gov/sites/production/files/2017-01/documents/ws-outdoor-water-efficient-landscaping.pdf)

## Rain Barrels:

- [www.epa.gov/soakuptherain/soak-rain-rain-barrels](http://www.epa.gov/soakuptherain/soak-rain-rain-barrels)